

GIGA X8

Changing the filter

Equipment required:
 Filter cartridge CLARIS Pro Smart+
 1 item (Art. 25055)



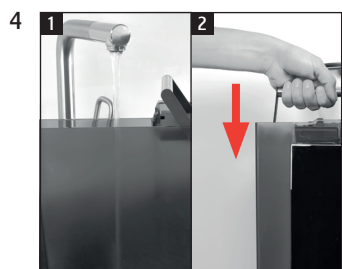
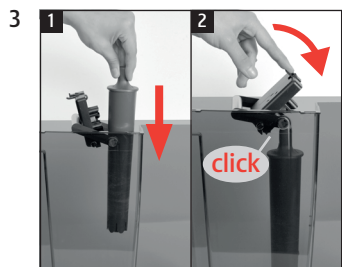
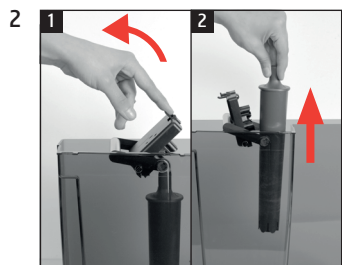
Filter cartridge CLARIS Pro Smart maxi
 1 item (Art. 24146)



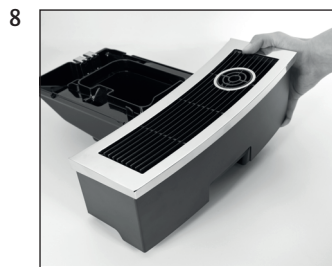
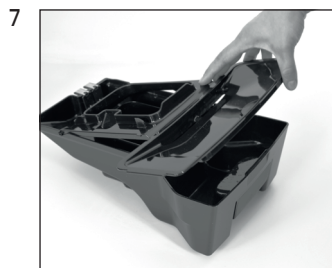
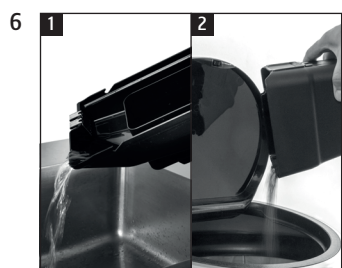
These short instructions do not replace the 'GIGA X8 Instructions for Use'. Make sure you read and observe the safety information and warnings first in order to avoid hazards.

'Display'

Precondition: 'Change the filter'



'Filter operation' / 'Saved'
 'Filter is being rinsed'
 'Empty drip tray.'



'Filter operation' / 'Filter rinsing complete'